



GOVERNANCE AND OVERSIGHT PACKAGES

About us

Our services have been developed as a result of extensive experience as inspectors and our continuous detailed analysis of inspection reports. Our aim is to provide clients with a customised service tailored to meet your individual needs and support you in continuing to improve the quality of your provision.



Our governance packages provide impartial, confidential, external governance in-line with the EIF, offering tailored expertise and oversight. Our expert team of current and former Ofsted inspectors will provide scrutiny and challenge with recommendations on how to drive improvements across the organisation, putting learners at the heart of their provision.

A quote from a clients 2023 Outstanding inspection report...

“ Leaders have put in place highly effective governance arrangements. Governors and non-executive directors have a broad skillset that they use with great effect to improve the provision. They have a detailed understanding of further education and take a real interest in the experience that apprentices and their employers have with XXXXX. Governors understand the strengths and weaknesses of the provision and provide high-level support on topics such as management structures and apprentices’ learning journey. They offer appropriate challenges and scrutiny to the leadership team at their frequent meetings, which helps leaders to make improvements, while also keeping apprentices at the centre of every decision made. ”



How it works

We deliver two levels of governance support depending on your current position.

1

Strategic Governance – External governance that supports the leadership team to deliver sustainable growth and minimise risk

- Monthly KIT meetings (approx. 1 hour) to provide opportunities for performance progress monitoring for example, out of funding learners beyond planned end date, learner progress and off-the-job compliance. The frequent meetings are designed to minimise risks as the provision changes or to plan for growth with integrity. KIT meetings will provide opportunities for updates, scrutiny and ongoing advice.
- KIT meetings also used to inform the leadership team on inspection trends.
- Four to six scheduled board or quality improvement committee meetings annually, that will feed into the board. Providing the board with confidence in the stretch and challenge with external scrutiny. The minutes from quality improvement meetings can be checked to ensure the discussion is captured appropriately, should these be required at inspection.
- Random sampling/learner forum direct with learners.
- Nearing the end of the year, review of self-assessment, and feedback on current judgments following learner feedback.
- Formal representation at inspection – your governor can be interviewed by Ofsted as part of your organisation within the governance role.



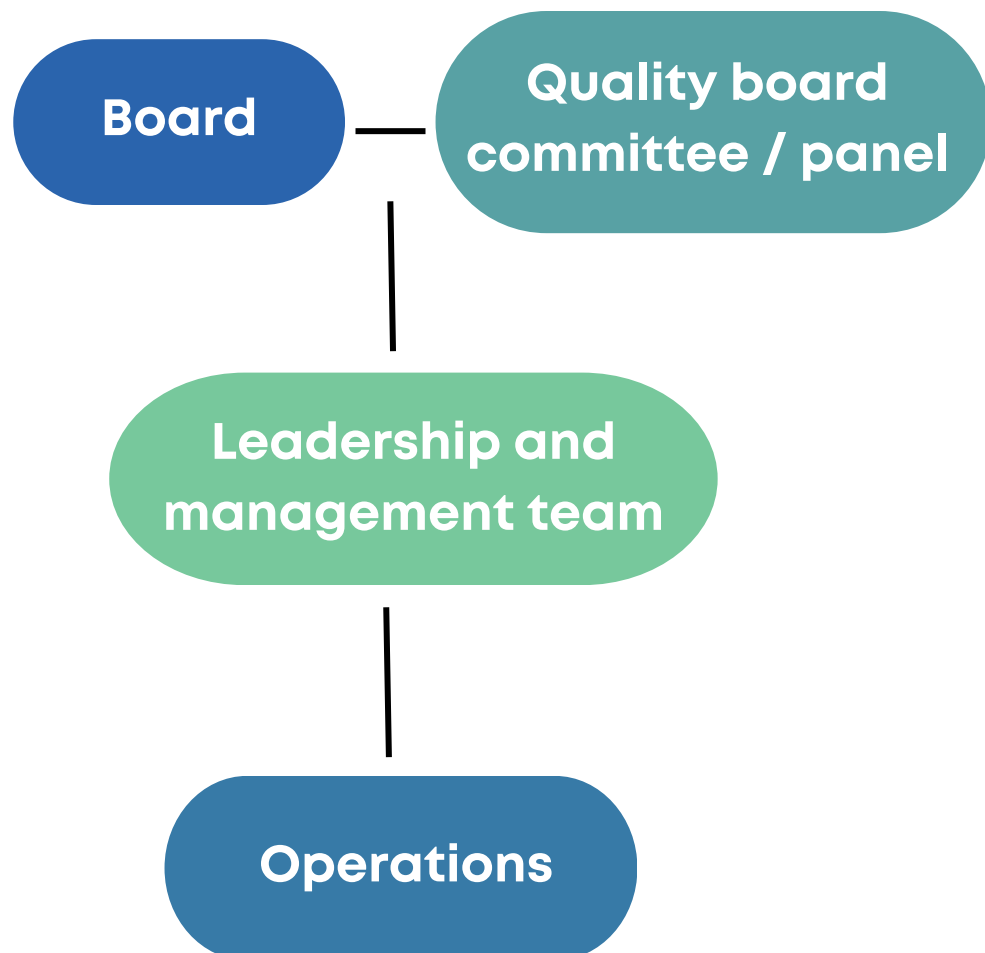
2 External Scrutiny and Governance – suitable for organisations who wish to deliver quality in their current operations

- Four to six scheduled board or quality improvement committee meetings annually that will feed into the board. Providing the board with confidence in the stretch and challenge with external scrutiny. A sample of minutes from quality improvement meetings can be checked to ensure the discussion is captured appropriately, should these be required at inspection.
- 5 sample interviews with your learners to feed into your self-evaluation and governance challenge.
- Interview with Ofsted on your behalf during inspection as an external specialist providing governance.

As an alternative to presence the board we offer creation of a quality/excellence committee who meet separately to your boards of governors. This would include members of the leadership and management team, and could include an external party, stakeholders and a board member. At ALIN our team bring the impartiality, giving the board confidence that they know the detail has been scrutinised at another level.

Where required, ALIN can offer a chair of the board role.

Quality Board Structure



Please contact us to discuss further and arrange a quote

For more information: info@alin.org.uk